

**Qty. Description**

1 CM 5-5 A-R-G-E-AVBE C-A-A-N



Product No.: [96935461](#)

Compact, reliable, horizontal, multistage, end-suction centrifugal pump with axial suction port and radial discharge port. Pump materials in contact with the liquid are in high-grade stainless steel. The mechanical shaft seal is a special designed, unbalanced O-ring seal. Pipework connection is via internal Whitworth pipe threads, Rp (ISO 7/1).

The pump is fitted with a 1-phase, foot-mounted, fan-cooled asynchronous motor.

**Controls:**

Frequency converter: None

**Liquid:**

Pumped liquid: Water

Liquid temperature range: -20 .. 90 °C

Selected liquid temperature: 20 °C

Density: 998.2 kg/m<sup>3</sup>

**Technical:**

Pump speed on which pump data are based: 2900 rpm

Rated flow: 4.7 m<sup>3</sup>/h

Rated head: 38.62 m

Code for shaft seal: AVBE

Approvals: CE,EAC,UKCA

Approvals for drinking water: ACS,NSF61,UBA

Curve tolerance: ISO9906:2012 3B

**Materials:**

Pump housing: Stainless steel

EN 1.4401

AISI 316

Impeller: Stainless steel

EN 1.4401

AISI 316

**Installation:**

Range of ambient temperature: -20 .. 55 °C

Maximum operating pressure: 10 bar

Max pressure at stated temp: 10 bar / 40 °C

6 bar / 90 °C

Type of connection: Rp

Size of inlet connection: 1 1/4 inch

Size of outlet connection: 1 inch

Outlet position: 12

**Electrical data:**

Motor standard: IEC

Frame size: 80B

Rated power - P2: 0.9 kW



Company name:

Created by:

Phone:

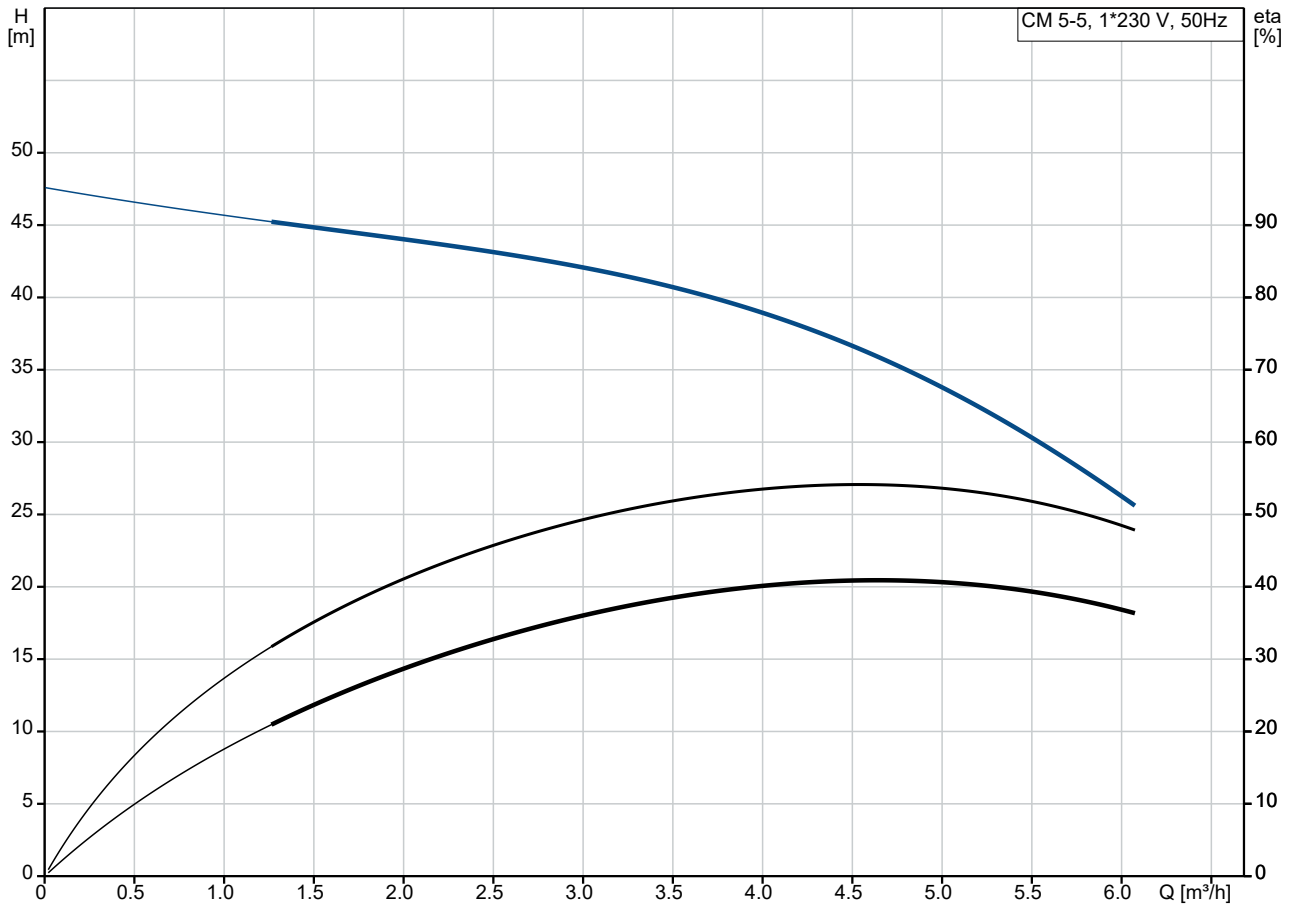
Date:

25/06/2024

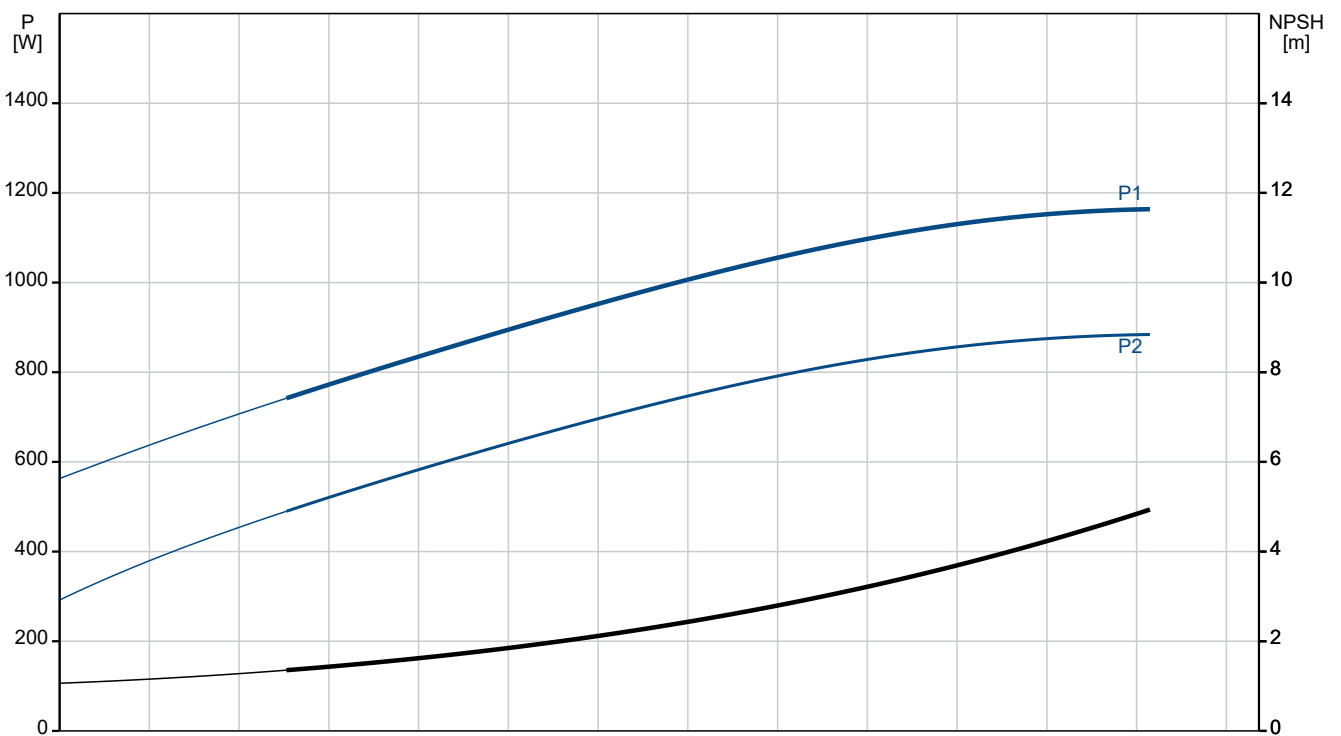
| Qty. | Description |
|------|-------------|
|------|-------------|

|   |                                      |
|---|--------------------------------------|
| 1 | Mains frequency: 50 Hz               |
|   | Suitable for 50/60 Hz: N             |
|   | Rated voltage: 1 x 220-240 V V       |
|   | Service factor: 1.00                 |
|   | Rated current: 5.4-5.0 A             |
|   | Starting current: 430 %              |
|   | Rated speed: 2750-2790 rpm           |
|   | Enclosure class (IEC 34-5): IP55     |
|   | Insulation class (IEC 85): F         |
|   | Built-in motor protection: PTO       |
|   | Cable included (Yes/No): N           |
|   | Others:                              |
|   | Terminal box position: 12            |
|   | Minimum efficiency index, MEI ≥: 0.7 |
|   | Net weight: 15.6 kg                  |
|   | Gross weight: 18.1 kg                |

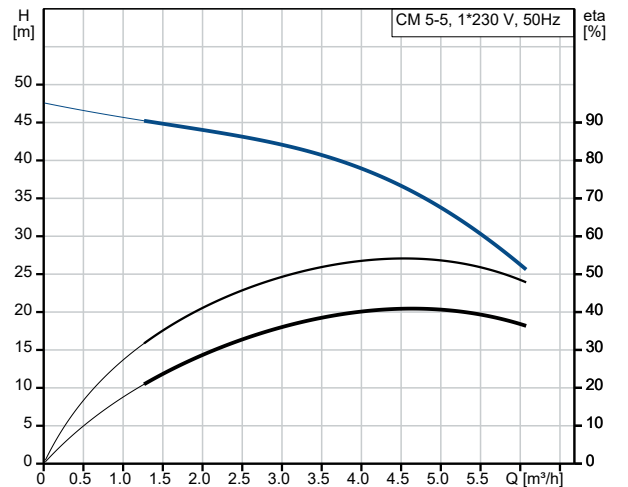
## 96935461 CM 5-5 A-R-G-E-AVBE C-A-A-N 50 Hz



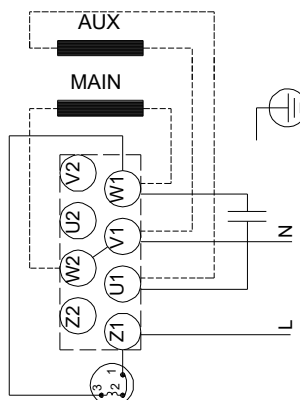
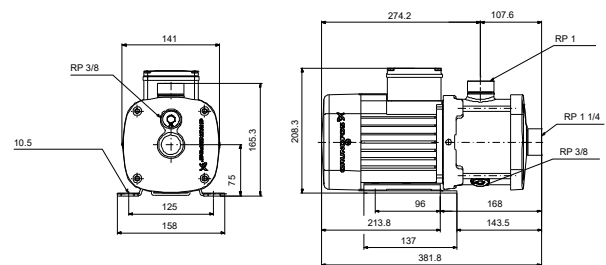
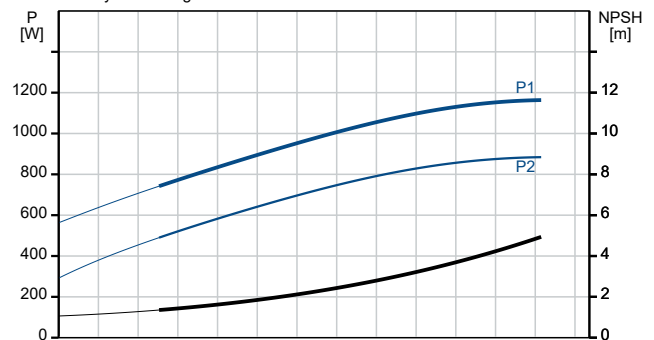
Pumped liquid = Water  
 Liquid temperature during operation = 20 °C  
 Density = 998.2 kg/m³



| Description                              | Value                       |
|------------------------------------------|-----------------------------|
| <b>General information:</b>              |                             |
| Product name:                            | CM 5-5 A-R-G-E-AVBE C-A-A-N |
| Product No:                              | 96935461                    |
| EAN number:                              | 5700314053697               |
| <b>Technical:</b>                        |                             |
| Pump speed on which pump data are based: | 2900 rpm                    |
| Rated flow:                              | 4.7 m³/h                    |
| Rated head:                              | 38.62 m                     |
| Impellers:                               | 5                           |
| Code for shaft seal:                     | AVBE                        |
| Approvals:                               | CE,EAC,UKCA                 |
| Approvals for drinking water:            | ACS,NSF61,UBA               |
| Curve tolerance:                         | ISO9906:2012 3B             |
| Pump version:                            | A                           |
| Model:                                   | A                           |
| <b>Materials:</b>                        |                             |
| Pump housing:                            | Stainless steel             |
| Pump housing:                            | EN 1.4401                   |
| Pump housing:                            | AISI 316                    |
| Impeller:                                | Stainless steel             |
| Impeller:                                | EN 1.4401                   |
| Impeller:                                | AISI 316                    |
| Material code:                           | G                           |
| Code for rubber:                         | E                           |
| <b>Installation:</b>                     |                             |
| Range of ambient temperature:            | -20 .. 55 °C                |
| Maximum operating pressure:              | 10 bar                      |
| Max pressure at stated temp:             | 10 bar / 40 °C              |
| Max pressure at stated temp:             | 6 bar / 90 °C               |
| Type of connection:                      | Rp                          |
| Size of inlet connection:                | 1 1/4 inch                  |
| Size of outlet connection:               | 1 inch                      |
| Outlet position:                         | 12                          |
| Connect code:                            | R                           |
| <b>Liquid:</b>                           |                             |
| Pumped liquid:                           | Water                       |
| Liquid temperature range:                | -20 .. 90 °C                |
| Selected liquid temperature:             | 20 °C                       |
| Density:                                 | 998.2 kg/m³                 |
| <b>Electrical data:</b>                  |                             |
| Motor standard:                          | IEC                         |
| Frame size:                              | 80B                         |
| Rated power - P2:                        | 0.9 kW                      |
| Mains frequency:                         | 50 Hz                       |
| Suitable for 50/60 Hz:                   | N                           |
| Rated voltage:                           | 1 x 220-240 V V             |
| Service factor:                          | 1.00                        |
| Rated current:                           | 5.4-5.0 A                   |
| Starting current:                        | 430 %                       |
| Rated speed:                             | 2750-2790 rpm               |
| Enclosure class (IEC 34-5):              | IP55                        |
| Insulation class (IEC 85):               | F                           |
| Built-in motor protection:               | PTO                         |
| Cable included (Yes/No):                 | N                           |
| <b>Controls:</b>                         |                             |
| Frequency converter:                     | None                        |



Pumped liquid = Water  
Liquid temperature during operation = 20 °C  
Density = 998.2 kg/m³





Company name:

Created by:

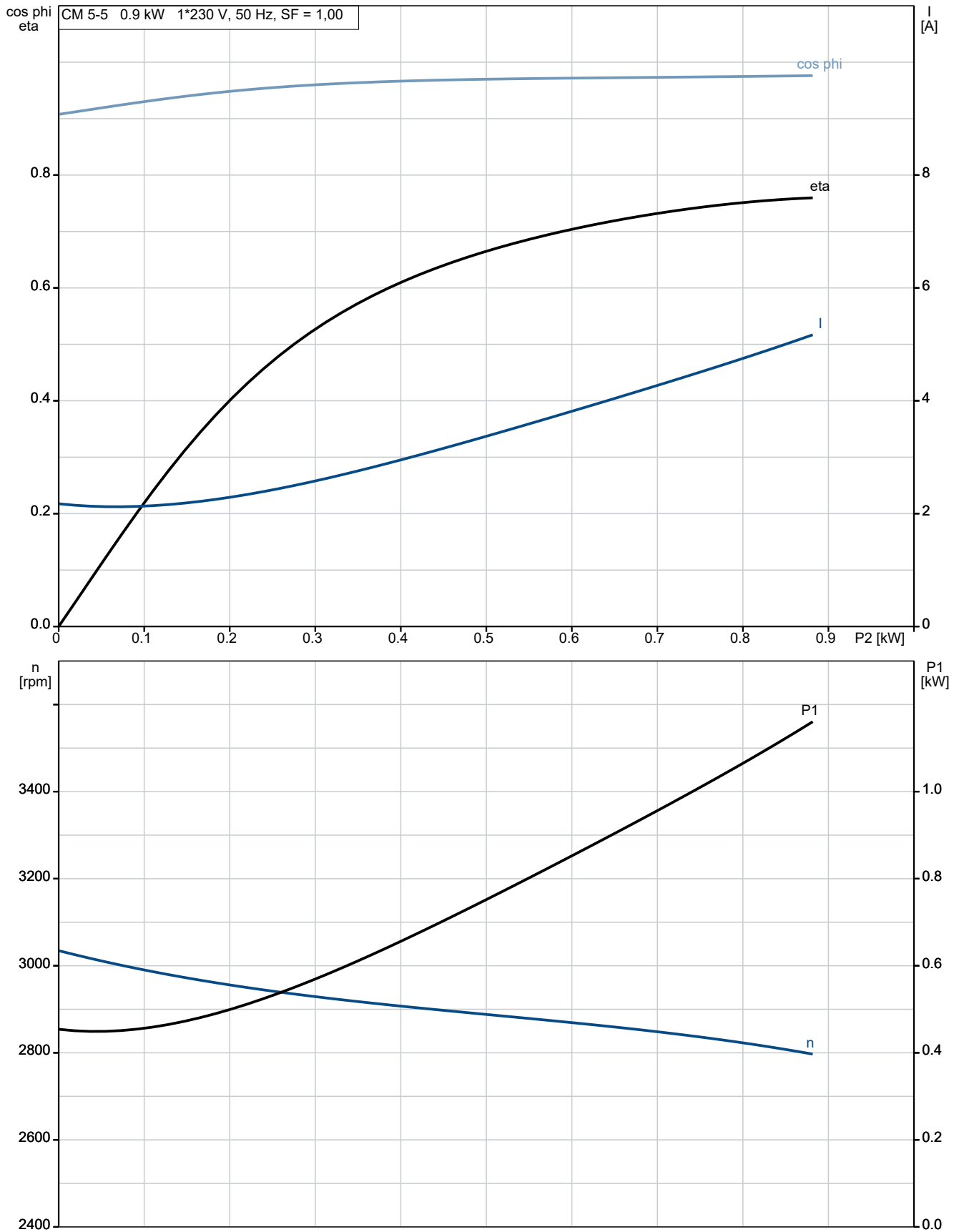
Phone:

Date:

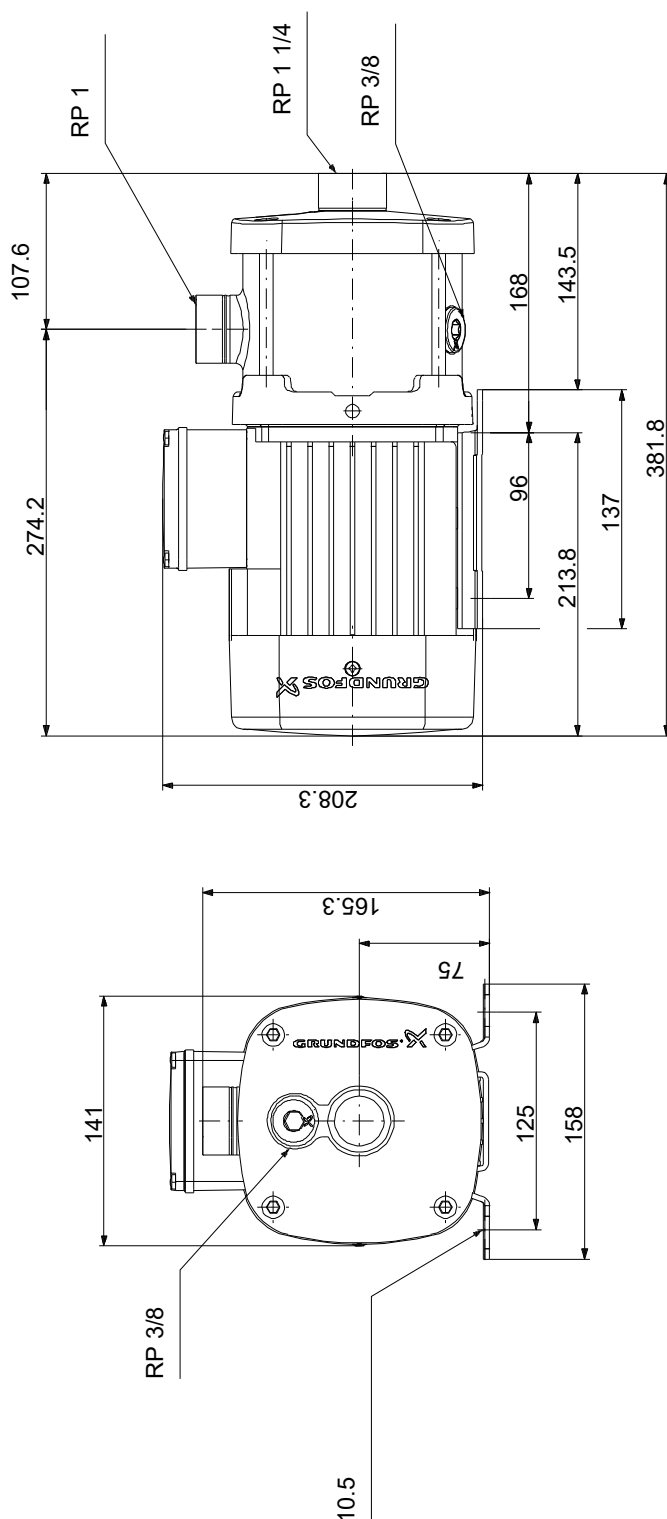
25/06/2024

| Description                            | Value   |
|----------------------------------------|---------|
| <b>Others:</b>                         |         |
| Terminal box position:                 | 12      |
| Minimum efficiency index, MEI $\geq$ : | 0.7     |
| Net weight:                            | 15.6 kg |
| Gross weight:                          | 18.1 kg |

## 96935461 CM 5-5 A-R-G-E-AVBE C-A-A-N 50 Hz



## 96935461 CM 5-5 A-R-G-E-AVBE C-A-A-N 50 Hz



Note! All units are in [mm] unless others are stated.  
Disclaimer: This simplified dimensional drawing does not show all details.